

OCTOBER  
2018  
ISSUE No 27

# Radcliffe on Trent NEWS SHEET

Registered Charity No. 1152459



THE UNIVERSITY OF THE THIRD AGE



Radcliffe U3A Knit and Natter group's bunting on display for the Tour of Britain cycle race.

**U3A Member's Monthly Meetings are held in The Grange : DOORS OPEN AT 2:00pm :**  
**Refreshments are served : Group Stalls advertise activities/enrolment:**  
**Announcements are made at 2:30pm with Guest Speaker at 2:45pm**

## CHAIRMAN'S MESSAGE



Well, I have returned from holiday to autumn, or even winter, or so it seems as I write. Good job we have U3A to help us through the seasons with what promises to be a great programme of speakers and trips and, of course, all our Groups, old and new.

Our wise Treasurer has commenced a review of our finances. More about this over the months ahead I suspect. Suffice it to say we must continue to run our finances carefully and prudently. The biggest risk we face is the rising cost of room hire.

So all this makes me continue to believe that our quite large and successful Radcliffe on Trent U3A must keep on doing its very best for the existing membership. In this regard, as ever, your views matter. I do so hope our new Letters To The Editor slot in The Newsletter will prove to be a good vehicle for this. Indeed, a good vehicle for anything interesting anyone wants to share, be it reminiscences or observations.

We must also continue to try and attract younger "Golden Oldies" who might have advanced modern skills. I am thinking technology. Why is it so easy for my grandchildren?

Finally, The Christmas Party, on Thursday 6<sup>th</sup> December, is closer than we think. It promises to be much fun with Adam Smith as guest speaker with "May Your Days Be Merry and Bright" as his theme. Hear hear !!!! Do not forget Father Christmas will be there, too, to check on your behaviour over the year.

See you soon, *Malcolm McDowell*

## LETTERS TO THE EDITOR

This is a new feature. We want to encourage interest, discussion, debate on all kinds of issues relating to what we do in the U3A.

Or what you would love to do. Anything our members would find stimulating or of news interest. If you have a story to tell, pictures to share or issues to raise send it to The Editors by e-mail at.....

**[news@rot-u3a.org.uk](mailto:news@rot-u3a.org.uk)**

Or by letter post at

**The Editors. 4 Lime Close,  
Radcliffe on Trent. NG122DF**

## OUR GUEST SPEAKER

TODAY IS

**STEVE SHORT**

Who will talk about the life of

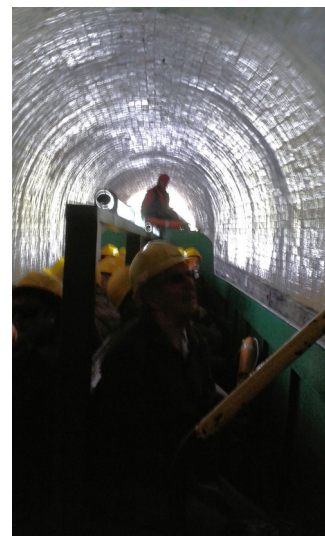
**TOMMY COOPER.....**

.....NOT LIKE THAT..LIKE  
THAT!

**TRIPS AND OUTINGS GROUP****DUDLEY CANAL AND GLASS CONE OUTING, 5TH SEPT**

They say that the sun shines on the righteous so we must be a very righteous bunch as the weather was absolutely gorgeous on the day of our outing to Dudley, an outing which took us through the middle of a volcano (extinct for a million years)!

The journey down from Radcliffe took a little longer than the two hours planned due to heavy traffic - well what do you expect leaving Vicarage Lane at 8:00 a.m., the height of the rush hour! However, we made it safely to the Dudley Canal Trust Portal basin and joined our guide for the two hour journey the full 2888m length of the mighty Dudley Tunnel (that's almost 2 miles "*in old money*!").



A slight hiccough when we set off on the boat as our guide who 'drove' the boat, ran it aground and then proceeded to manually tow the vessel loaded with forty people to the mouth of the tunnel proper! (see pic!)

Once this initial problem was overcome we set off on a two hour tour of the Limestone Mines and Caverns including an entertaining video show in Little Tess Cavern and a music and light show in the Singing Cavern followed by a light lunch at the Trust's hub building at Tipton.

(I have to say the tunnel was a bit chilly and damp and I regretted not listening to my wife's advice and taking along a heavier jacket!)

It was then a 20 minute or so drive to the Red House Glass Cone at Wordsley near Stourbridge, formerly the main glassworks for Stuart Crystal but now a most interesting museum showing how lead crystal was made notably in the eighteenth and nineteenth century. The ladies who guided us through the glassworks were unbelievably knowledgeable and verbally lived the glass making process for us.

All that remained after that was a visit to the museum shop to spend some money and then a two hour journey back to Radcliffe.

Another good day out; many thanks **Sandra & Derek.**

**Centenary of the End of World War One**

As part of the commemorations to mark the centenary of the end of World War One in 1918, the Radcliffe U3A WW1 Study Group and Radcliffe on Trent Male Voice Choir are holding a concert in St Mary's Church, Radcliffe on Trent on Thursday 8<sup>th</sup> November at 7.30 pm. The concert will include songs performed by the Male Voice Choir and the Bridge Singers and pieces by young flautist, Katie Miller. Members of the WW1 Group will be reading accounts by Radcliffe residents of their personal experiences of the Great War.

Tickets are £3 and will be available from Pen2Paper, Main Road, Radcliffe or purchased on the door.

Further details from John Parry, email [johnparry081@btinternet.com](mailto:johnparry081@btinternet.com) or telephone 0115 933 4060.

**Knit'n'Natter Group**

A big THANK YOU to all the ladies for the Bunting!

The Tour of Britain Cycle Race passed through very quickly but didn't the village look grand?! The Methodist Church on Shelford Road was very suitably festooned with our efforts for the weekend and we shall now spend the next few weeks disassembling the bunting and recycling it into blankets for the baby bundles.

The group meets again at my house on Tuesday 9<sup>th</sup> October at 2pm.

**Jan Addiscott** - 8457398.

**NEW..... STRICTLY JIVE**

Our U3A "Strictly Jiving" Group **has started** with 37 participants enjoying the experience.!

Weekly sessions on Wednesday afternoons will run through to Christmas., at the Royal British Legion. From 3-5pm.

So, let's Revive The Jive!! ( The Jive 'Til Five Club! ).

Our instructors are the experienced Terry and Lynn from Nottingham's "Revival Dance" Studio.

Cost is £5 per session for U3A Members; £7 for Guests ( Max. 2 visits ).

**Chris Worthington** Tel : **01159332747 or 07880797593**

or email : **worthington690@btinternet.com**

Or better still – just turn up on the day and rock'n'roll.

**NEW — AVIATION AND AEROSPACE GROUP.**

Our first meeting will be one where we get to know each other and discuss our interests and how we can all contribute to broadening and deepening our knowledge of this wide ranging subject. I will facilitate this session up to a refreshment break and Roger Alton (who has kindly offered to be Deputy Group Leader) has suggested that he follows with short 'You Tube' videos on Barnes Wallis. Other 'big names' in aviation history will include Alex Henshaw and Capt. Eric 'Winkle' Brown and others that we may wish to learn more about their achievements and lives at future meetings.

Our future programme will be developed from ideas that evolve from this meeting and could include talks by individual members, discussions and debates on aviation & aerospace issues, visits to aviation & aerospace centres, films/videos and maybe quizzes. There will be a small charge of £2.00/head to cover meeting room costs and light refreshments.

I look forward to meeting with you all to develop our programme for the next year and enjoy the company of fellow enthusiasts.

**Mike Seymour** 01949 81981, - seymourmd@aol.com

**Roger Alton** 0115 9334705, - rogerallton@hotmail.co.uk

**INAUGURAL MEETING 6 NOVEMBER @ 2.00PM-4.00PM @ THE  
RADCLIFFE ROOM, THE GRANGE**

**UKULELE GROUP**

We continue to meet regularly, with volunteers from among the group now leading many of our sessions. This summer, we have played at Radcliffe-on-Trent Carnival and a charity Garden Party in Normanton -on-the-Wolds.

**Now for an appeal!**

We do not profess to be singers and are aware our singing is not always up to scratch. However, ukulele and singing go hand in glove! To this end, we wonder if there are any U3A members (gentlemen or ladies) who have a talent for singing and who would be interested in joining us to strengthen our vocals. Attendance at our sessions would be entirely as you wish, either on a regular basis or just for a few sessions prior to a performance to familiarise yourselves with the songs. This latter is, of course, when we really need some help. We are looking for around six singers.

We meet each Thursday from 3.30 – 5.30 in the British Legion building.

For further information please contact **Lyn Coxon**

**November Meeting Talk ..... Radcliffe on Trent 1918: What Happened Next?**

Speakers: **Marion Caunt, Rosie Collins and Pauline Woodhouse** from Radcliffe on Trent WWI Group

This illustrated talk on **November 1st** by Radcliffe on Trent WWI Group explores how the First World War affected the village from the Armistice to the mid 1920s. Using original material the speakers examine life in the village when the war ended, return of the servicemen, jobs and 'homes for heroes', visits from Royalty and much more. The accompanying slideshow includes many period pictures collected by the WWI Group, displayed for the first time. Don't miss this fascinating insight into the lives of local residents who served in the Great War and what happened next.

**The talk will be repeated in the evening at Grange Hall, 7.30 pm. All welcome. Admission £1 on the door.**



**GEOLOGY AND ENVIRONMENTAL STUDIES GROUP.**

Our last meeting comprised an all day visit to the Matlock area on 11th September. leaving RoT at 9pm 17 members met at Matlock station for a walking exploration of the valley and gorge cut by the River Derwent into limestones forming the eastern border of the "White Peak".

This area was notable for two contrasting economic activities , lead mining and weaving, the success of both being due to in part to the power derived from the river and its tributaries. In the case of the former the creation of steep valleys and sheer rock faces exposed many mineral veins to exploitation, the latter benefitted from the powering of mechanical mass weaving apparati (Mills).

In Georgian and Victorian times a 3rd activity, tourism, arose based on the rugged landscape and use of water for therapeutic purposes, hence the warm baths and spas of the "Matlocks".

Our exploration consisted of firstly traversing the low ground on riverside paths and then climbing to the upper portions of the cliffs which enclose the valley in parts. Great views, old mine works and steep paths were negotiated and the outing ended by descending to river level at one of the Victorian spas now the site the fine Lead Mining Museum in Matlock Bath where splendid mineral specimens and many displays give a fine overview of this now defunct industry.

**Next Meeting: 9th Oct.**

This is a further exploration of the Matlock area including using the Cable Car at Matlock Bath, giving access to several caverns within the Heights of Abraham Theme Park but also a quick entry to the high country beyond towards Bonsall, where we hope to locate some of the old mine workings in a search for specimens.

More information from [www.martinclarke@live.co.uk](mailto:www.martinclarke@live.co.uk) (Group Leader).



**SCOTTISH COUNTRY DANCING**

We will recommence on Wednesday afternoons, starting 3rd October, at 2pm in St Mary's church hall (excluding the last Wednesday of the month).

Join us for fun, good exercise and the opportunity to learn something new.

Contact Jean Hudson at [rotscd@gmail.com](mailto:rotscd@gmail.com) for further information.

**RADCLIFFE ON TRENT U3A WEB PAGE**

We have over forty interest groups in the Radcliffe on Trent U3A covering a wide range of activities and interests from

**Aviation Group to Jive Group.**

See the full list on:-

**[www.rot-u3a.org.uk](http://www.rot-u3a.org.uk)**

**Passionate about Poetry?**

Our small friendly group is ! Come and see.

**Contact Anne On 8417991**

**CLASSICAL MUSIC**

The Classical Music Appreciation Group will next meet on Thursday 18th October from 10.30am to 12.30pm in the Dowson Room at the Grange. £1.50 per head, including tea/coffee/biscuits.

New members welcomed.

For further details contact **Joyce Bullimore**  
[joyce@bullimore.f9.co.uk](mailto:joyce@bullimore.f9.co.uk).

**2nd WINE TASTING GROUP**

We have had a suggestion for a new group If any member is willing to organise this potential group as GROUP LEADER can you please contact me.

**Geraldine Sleight**

Group Co-ordinator

Email : [radcliffeu3a.groups@gmail.com](mailto:radcliffeu3a.groups@gmail.com)

**EATING OUT**

Cafe Piano have kindly offered all members of Radcliffe on Trent U3A a 10% discount on food for lunches & dinners on production of a current ROT membership card. Please show your card to the server when ordering your meal.

This offer is only valid for parties of 10 people or less. Please note this offer is not valid with any other offers.

**Steve Harris**

**NOVEMBER'S NEWS SHEET**

For the next issue of our U3A monthly Newssheet please send your news, articles and photos to our Editors at

[news@rot-u3a.org.uk](mailto:news@rot-u3a.org.uk)

by **20th OCT, 2018**

Thank you **Editorial Team**

**TAILPIECE.**

What do you call a fish with no eyes?

.....a fsh !