

DEC 2016
ISSUE No 9

Radcliffe on Trent NEWS SHEET

Registered Charity No. 1152459



THE UNIVERSITY OF THE THIRD AGE



To all Radcliffe on Trent U3A members.

Wishing you a Happy Christmas and Peaceful New Year,

from your Chairman, all the Committee and the News Editors

Geology and Environmental Studies Group

NEXT (CHRISTMAS) MEETING – 2pm
Tuesday 20th Dec in Grange Hall Trent
Room. The content has the form of a **Re-
view and summary of our activities dur-
ing 2016** so would be a good opportuni-
ty for both regular and potential members
to revise or gain an insight into our last 12
months topics, also, plans for 2017. Mince
pies and Sherry will be provided, to assist
any subsequent discussions!

Our October meeting featured a talk -
"**Between a Rock and a Hard Place**". by
Dr Barry Page formerly a geologist with
BGS Keyworth. This comprised a selection
of reminiscences of Barry's working life as
an Overseas Geologist and included ex-
ploring the Mekong River in Laos during
the Vietnam war, climbing fearsome gran-
ite pinnacles in Patagonia and small boat
exploration of the gale swept Beagle chan-
nel near Cape Horn - (during which the
captain died) and Barry's participation in
Snake wrestling in Indonesia. A most en-
tertaining and awesome recollection of
times when Health and Safety was largely
ignored!

Our November meeting, "**From Anticline
to Anticyclone**" was a talk by Terry
Scholey who you may have heard as a
weatherman on local radio. Terry, like Bar-
ry, is a resident of Radcliffe and has a
great interest in long term climate models
and their possible relation to, e.g. Sun-
spots. His predictions rely in part on histori-
cal data and provoked discussion of alter-
native causes of Climate Change.

For any queries or comments contact Mar-
tin Clarke, (Group Leader), by email at

martinclarke@live.co.uk

From Our November Guest Speaker



A BIG THANK YOU.

Andy Smith, our November
speaker, would like to thank you
for raising £116.08 at the meet-
ing. Andy will divide this sum
between Cystic Fibrosis and
Macmillan Nurses, two charities
very personal to him.

OUR WEB PAGE

We have over forty interest
groups in the Radcliffe on
Trent U3A covering subjects
from "Art" to "Wine". See
the full list on our Website at

**www.rot-
u3a.org.uk**

Garden Group

Our Garden group will not be meet-
ing in December and January - it is
our winter break.

First meeting of 2017 is likely to be
on Thursday, February 9th - venue to
be arranged.

We have had a very enjoyable year.

Happy Christmas to all our mem-
bers. Thank you for your apprecia-
tion and support.

Roger Burston

Archaeology Group

We have made a great
start. Some of us went
to a talk about The Last
Journey of King John at
Newark. This winter a
group have set them-
selves a task of dating
all the hedgerows in the
Parish and another
group are undertaking
primary research of the
Motte & Bailey Castle
on Kingsway, with a
view to future digs next
year.

We will be finds wash-
ing and cataloging at
the Boys Brigade Hall at
1pm on Friday 9th De-
cember and Friday 6th
January. Everyone wel-
come. Anne McLeod

Knit & Natter Group

During November we have been able to donate the following: 91 baby hats and 3 baby blankets to the QMC; 20 twiddlemuffs to Dementia patients at the QMC and three blankets to the Police Charity in Bingham. (See photos)

Please note there will be NO meeting for our group in December. The next meeting will be held on Tuesday, 10th January."



Jan Addiscott

<jan@addiscott.net>

PLAYREADING GROUP

Our next playreading group meeting will be Thurs Dec 8th. We will have mince pies as well as coffee and water as it will be last meeting before Xmas!

We went on a small group outing to see the Radventures production of "Instructions for American Servicemen in Britain" on Wed Nov 16th at Grange Hall, described as a rib-tickling new comedy! We love comedies and also read thrillers and have been pleased to welcome more men to the group recently. There are now 5 on the mailing list!

New members are always welcome to our fun friendly group. No experience required.

For more info ring **Pam** on

Tel. **0115 9335382** or email
pamthompson2@btinternet.com

Would any of the u3a members be interested in forming / running a **Photography Group**.

Please contact **Geraldine Sleight**, Group Coordinator

On email:

groups@rot-u3a.org.uk

NEED SOMEWHERE TO HOLD YOUR MEETING?

Any Group looking for a venue to hold their meetings? The Boys' Brigade Hall is available most daytimes & most Monday evenings after 7pm.

Please contact **Bob Jones** on

Tel. **0115 9334306**



Some Friendship & Support Group members say hello to the Richard III statue set between Leicester Cathedral and the new Richard III Museum, Leicester (photo below).



FLOWER ARRANGING GROUP



This is Stephany, Diane and Jill having a break after producing their flower arrangements. I usually demonstrate a design at the end of the session and the group produces their versions in a fortnight's time. We meet on Wednesday afternoons in the dining room of the Royal British Legion Hall. On Wednesday, 7th December we would like to invite members of the U3A to join us at a Workshop to make a Christmas table arrangement for your home or a Christmas Party. Call or text **Gerry Mills** on **07774068219**.

To all Radcliffe on Trent U3A members,

This Newssheet is intended to give all U3A members and that includes you, an opportunity to submit articles and photographs.

So if you have anything that you think is of relevance and interest to our members ..especially photos....send them please to:- news@rot-u3a.org.uk

NEED THE USE OF A MINI-BUS

The Radcliffe Methodist Community Mini-bus which seats 14 plus a driver is available for U3A Groups to hire most weekdays. The hire cost varies for the length of time required but is approx. £40 for a day plus petrol used..

It was used by the Friendship and Support Group recently for a day trip to the Crich Tram Museum and also a day trip to see Richard III Museum and Cathedral at Leicester.

For details contact **Rodney Fogg** tel. **07971537119**



Members Monthly Meeting

**Thursday 1st December 2016
1.15pm
Grange Hall**

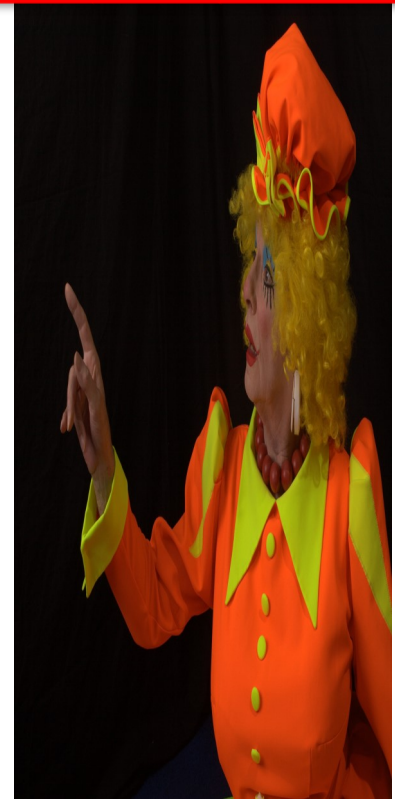
CHRISTMAS SOCIAL

RICHARD WESTCOTT

**CONFESSIONS
OF A PANTOMIME DAME**

**TICKETS £2
Members Only**

**Wine / Mince Pies / Quiz / Ticket
Prize Draw / Raffle**



Non-members and Visitors

At November's committee meeting the topic of non-members and guests from other U3As paying £2 was discussed as several Group Leaders had expressed concern. This was originally proposed in September 2012 and reviewed in July 2014. The Committee voted to retain the £2 fee. It was felt that our members should not subsidise others and that £2 is not an unacceptable amount for a visitor to pay. Group Leaders should also remember that after visiting twice the guest needs to become a member of Radcliffe U3A if they wish to continue participating. This is why it is so important that Group Leaders keep a record of members in their group and pass it to the Group-Coordinator regularly.

Holiday Group

We meet at 12.00 on the 1st Tuesday of each month at Cafe 29 on Station Terrace. Quite a few of us went away together in 2016 and we are now planning 2017. Bruges, Sicily, Devon and quite a few other destinations being planned. Everyone welcome.

Anne McLeod

Happy Group of Croquet Players



January Guest Speaker

Annette Taylor

Annette..... All at Sea

Award winning cruise director Annette Taylor will give an illustrated talk about her favourite cruising experiences and take the audience behind the scenes on-board cruise ships and the world of cruising.

Thursday 5th January at Grange Hall, Radcliffe on Trent.
1.30 – 3.30pm.

Guests £2

Free tea /coffee and biscuits for all.

Group leaders will be available to chat about the various interest groups.

For further information please contact Anne Spencer on 0115 9335273

MONTHLY MEETINGS AT GRANGE HALL

The U3A Committee is very aware of the ongoing problems regarding the sound quality at some monthly meetings and apologise for the less than perfect quality on the last few occasions. We have written to the Parish Council, met with Grange Hall staff and purchased our own equipment to reduce our reliance on Grange Hall equipment. The sound system has had a couple of faults and Grange Hall have now had these fixed.

I know that not being able to hear the speaker is extremely frustrating. Suggestions that might help include switch your hearing aid to the 'T' position [if it has one] at the beginning of the meeting, sit nearer the front -there are always spaces free on the front row and finally tell the speaker you can't hear them so that they speak louder or more slowly. It is very difficult when using a microphone to gauge where to pitch your voice so that you are heard without shouting.

Anne McLeod

**News Items for January
should reach**

news@rot-u3a.org.uk

By December 20th

PLEASE